



PERFORMANCE USA LLC

Jan 16, 2015

1968-1974 Nova T-56 Transmission Tunnel Cover

Part number 120510



Installation Instructions

The following instructions are intended for professional installers and are guidelines only. Speedtech Performance assumes NO responsibility for the installation of any of its products. All products are intended for off road use only and must be installed by qualified professionals only

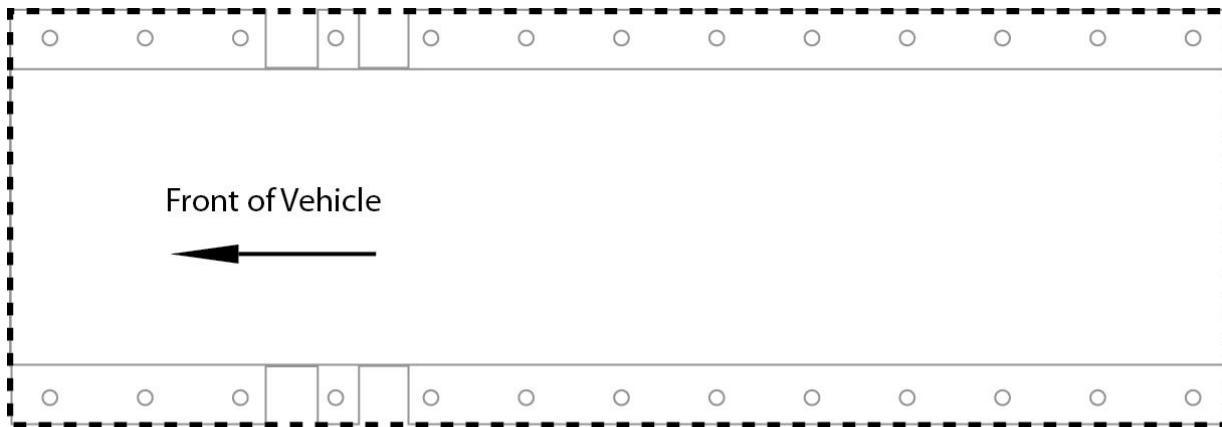
Thank you for purchasing your new Speedtech Transmission Tunnel Cover. If you are unsure how to use the tools and materials required to install this cover, stop and seek a professional installer's help. Installing this product may require the removal and re-install of your transmission. Take all necessary precautions whenever jacking up your vehicle and be sure to use safe and sturdy jack stands to support the vehicle whenever it is off the ground.

This Tunnel Cover can be installed with simple hand and power tools. You will be required to drill some holes and cut a hole in the floor for transmission clearance and a hole in the Tunnel Cover for the shifter. Be sure to wear the proper protective gear when using power tools.

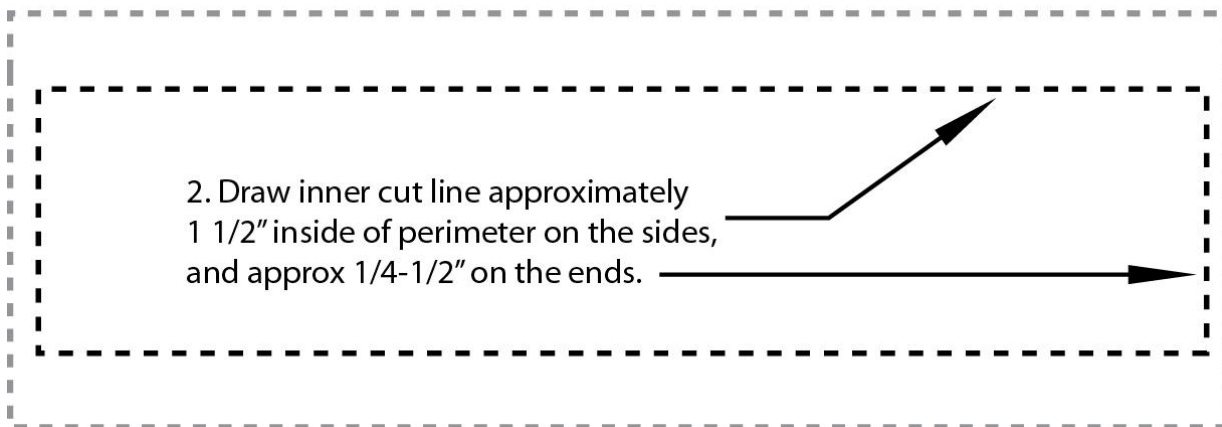
If you plan to weld the cover to the floor, be sure to take necessary precautions when welding inside a vehicle to remove any close-by flammable materials.

Although not completely necessary, we have found it easiest and safest to remove the carpet from the car to perform this installation.

1. Find the final location for engine and transmission fitment within the car's frame. Find and mark the shifter arm location on the transmission tunnel on the interior of the car. Considering where the shifter will be located, use your tunnel cover and mock up it's location on the interior of the car. The slanted end goes towards the front of the car. Trace the outside of the tunnel cover and set it aside. Then draw another line approximately 1 1/2" to the inside of the first line. These will be your cut lines. DON'T cut at the outer perimeter.



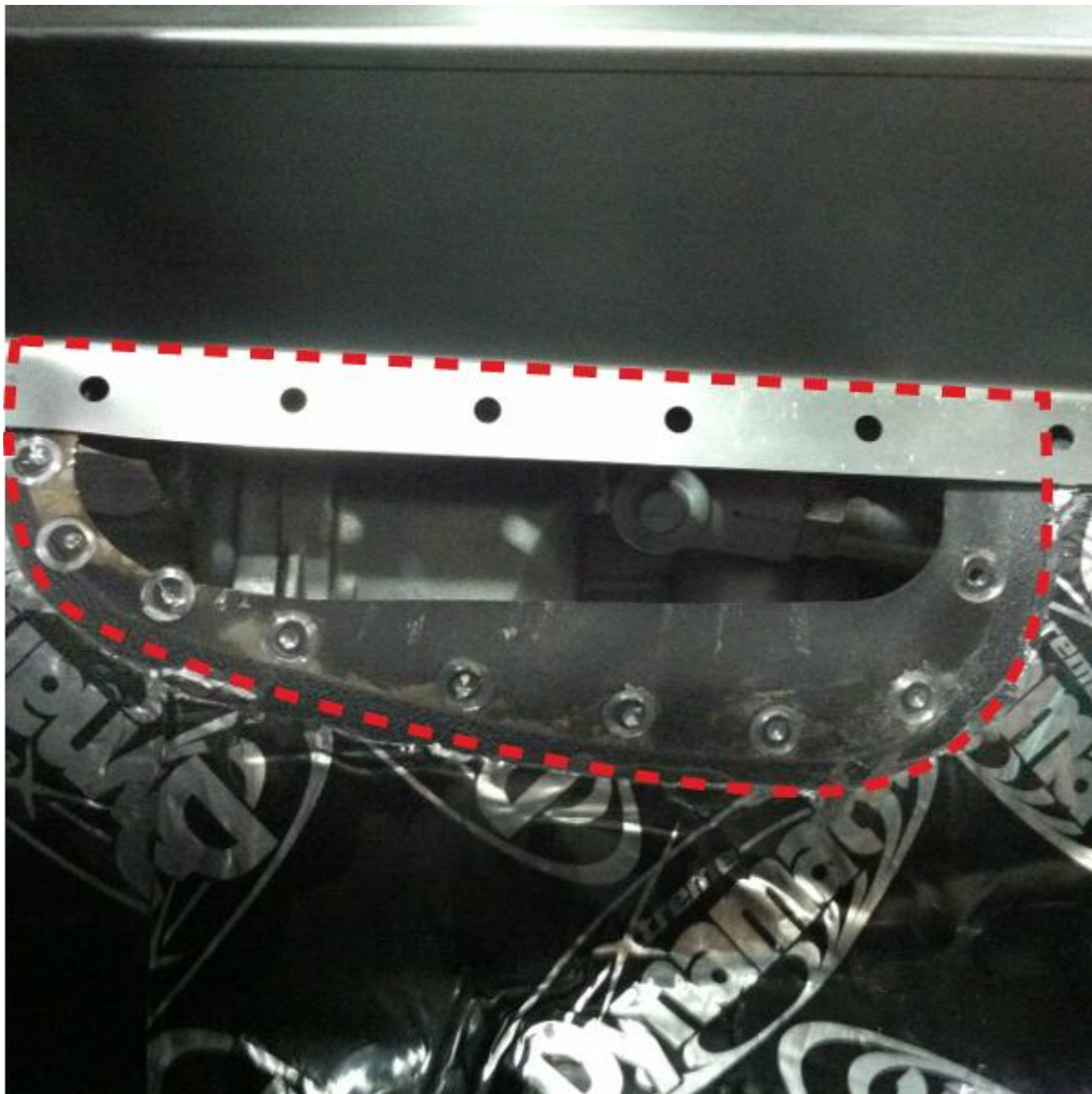
1. Test fit tunnel cover in place. Trace outer perimeter guideline.



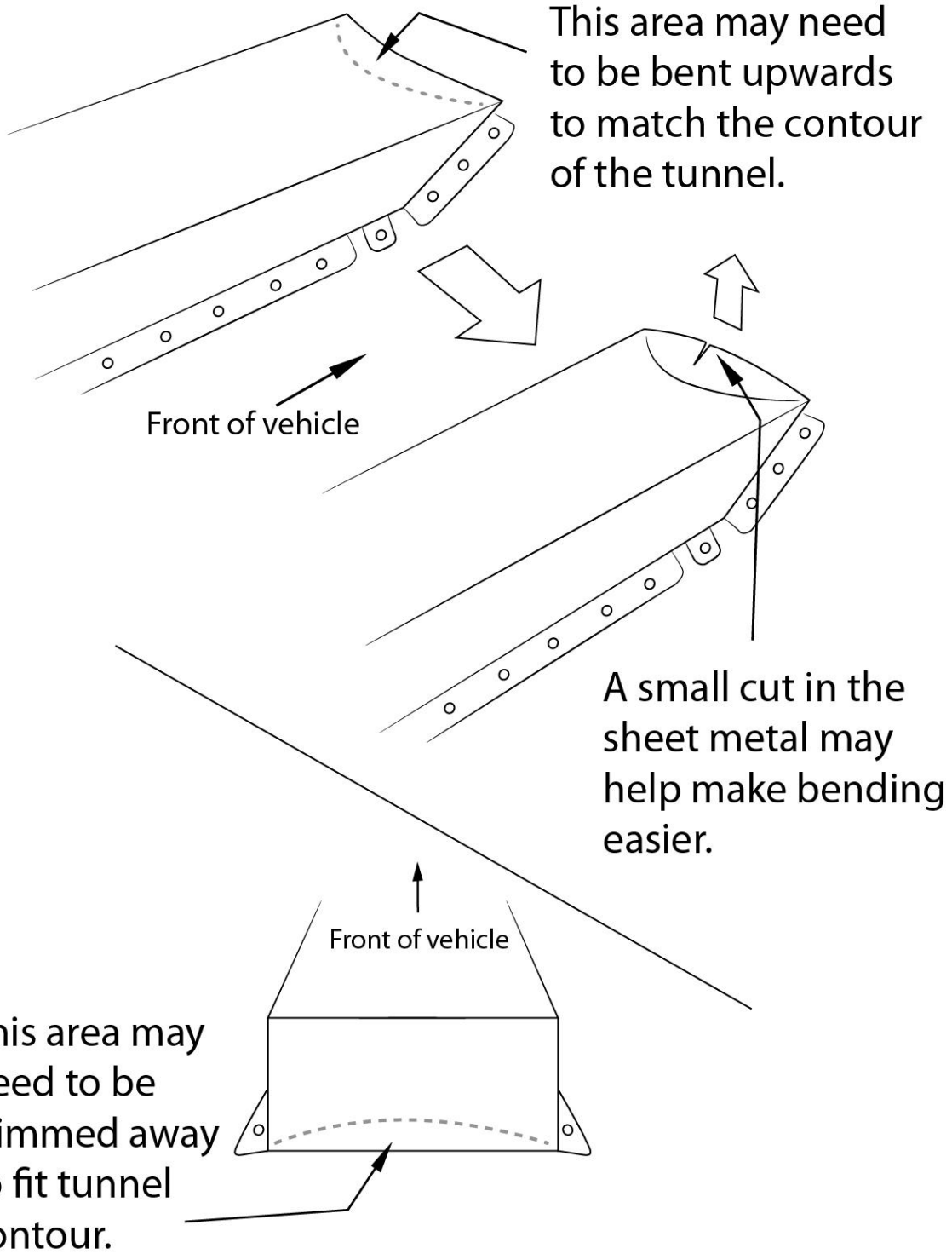
3. Once your cut lines are laid out, take the necessary safety precautions and carefully cut out the rectangular portion of the tunnel within your marks. Test fit the transmission in place. Because of model differences and factory tolerances further trimming may be required. Be sure there is a small amount of clearance to allow the drive train to flex without hitting the floor. The end result should look something like this



4. Factory floor shifted Novas will need the shifter hump removed and a piece of sheetmetal attached in its place to seal off the rest of the tunnel. See below.



5. Some slight modification may be required to custom fit your tunnel cover to your specific car. Most common is bending the forward edge up to match the rise towards the firewall, and some slight trimming on the rear to match the contour of the tunnel, see illustrations below.

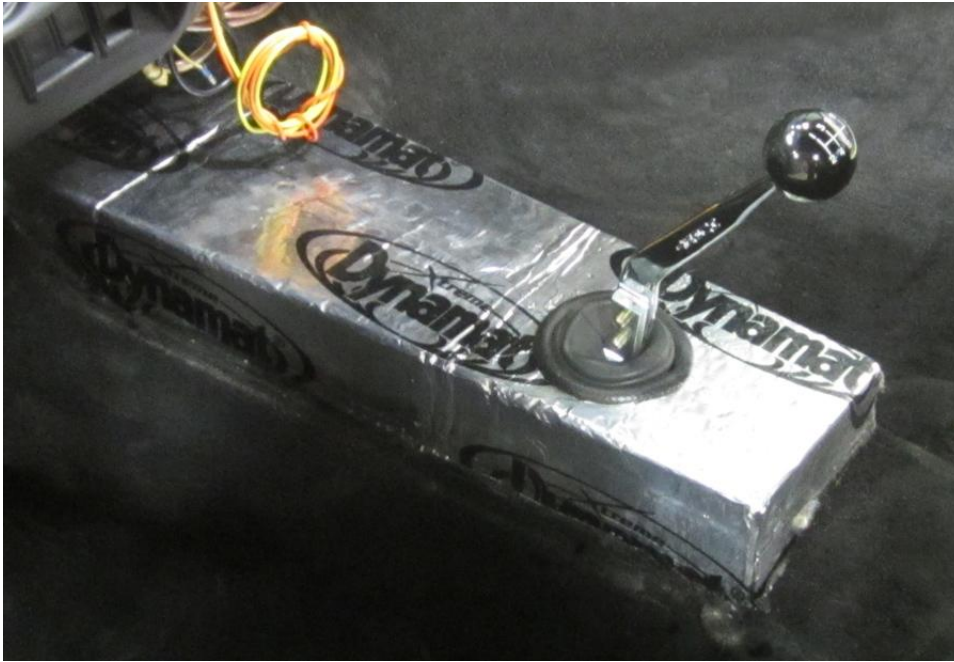


6. Next you will need to mark the Tunnel Cover for the shifter location in relation to the cover's position on the transmission tunnel. Cut a hole approximately 3.5" in diameter for the T-56 boot to fit through. We recommend splitting and wrapping vacuum tubing around the diameter of the hole to prevent gouging the shifter boot. Lay the Tunnel Cover over the transmission. With a plastic mallet tap the flanges down so that they mate up to the angle of the floor pan. Reposition the shifter boot as necessary to seal off the round hole.



7. As the inside of the Tunnel Cover and the area of the floor pan covered by the Tunnel Cover may be exposed to outside elements, we recommend protecting these areas with a high quality paint or other surface protector. Attach the Tunnel Cover securely to the floor. We recommend using a high quality seam sealer on areas where the Tunnel Cover makes contact with the floor pan, and in any area where there may be flange gaps because of floor pan shape.

7. Cover your tunnel cover as fits your needs.



Speedtech Performance USA, LLC
3884 S. River Rd. St. George, UT 84770
435-628-4300

Terms and Conditions of Sale

1. Effective January, 2008, supersedes all previous policy statements. Policies are subject to change without notice. Speed tech performance Ltd. is not responsible for printing errors.
2. Speed Tech Performance Ltd. does not endorse, nor recommend modification of vehicles for use on public highways, since warranty or government regulations may be violated. As an express condition of sale of any performance part, the buyer acknowledges and agrees to use the performance parts for the modification of vehicles in sanctioned OFF-ROAD competitive events and show purposes only. Customers should exercise their discretions on matters with regards to the purchase and installation of these products.
3. Speed Tech Performance Ltd. does not ensure the legal use of these products. We do not guarantee the fitment of these products for anything other than there intended application nor do we assume any responsibilities what so ever for the misuse or losses incurred by the use of any of these components. While every effort is made to provide technical information and assistance, we have no control over owner installation, modification, and unusual stress that performance parts are subject to.
4. The customer acknowledges that Speed Tech Performance Ltd. and its employees are not responsible for any mechanical failures due to the use of parts sold, supplied or installed not for their intended application. Speed Tech Performance Ltd will not be held liable for any damages which are incurred directly or indirectly on the vehicles or operators or passengers of the vehicle
5. Please consult your sales agent and/or technician prior to purchase of any of Speed Tech Performance Ltd. Products to ensure proper fit. The buyer assumes all responsibilities for determining the suitability of the product. All aftermarket products should always be installed by professionals only.

Warranty Claim:

1. Speed tech Performance Ltd. Warrants its products against materials and workmanship failure for the term of 12 months (1 year) from the date of purchase and only up to the amount paid with proof of purchase.
2. Seller's liability shall as limited to repairing or replacing, at its option, any defective product which is returned, freight prepaid to Seller, according to the Merchandise Return Procedure set forth in Section 3 below. Buyer shall bear all responsibility for shipping charges and risk of loss or damage during transit to Seller. Products which have been subjected to abuse, misuse, alteration, neglect or unauthorized repair or installation, as determined solely by Seller, are not covered by this warranty. Any alterations, addition, improvements or attachments to the product(s) not authorized in writing by the Seller shall be deemed to be a waiver of this warranty by Buyer and shall render this warranty null and void. Seller shall return repaired or replaced product(s) to Buyer, at its expense via regular ground service in Canada. Shipping charges by all other methods and to all other destinations shall be borne by Buyer.
3. Merchandise return procedure
 - A. If you purchased your Speed tech performance ltd product from us or from an authorized dealer, you are covered by the terms of this policy. All claims however, must be submitted directly to Speed tech performance Ltd.
 - B. Call the customer service representative at 1-888-467-1625.
 - C. Provide the invoice number, date of purchase and reason for return
 - D. You will be assigned a Returned Goods Authorization Number (RGA). The package you return must show the RGA on the outside of the package, include the original invoice and be shipped prepaid to our facility. The part has to be in its original packaging materials and be in a sellable condition. For parts presenting signs of use, only warranty claims will be accepted.
 - E. Ship to seller, freight pre-paid and insured for replacement cost in original packaging.
 - F. Replacement or repair decision will be made when merchandise is received by seller. No advance replacement is available.

How to File a Warranty Claim:

The answer to ALL the following questions should be YES before contacting our Customer Service Department.

Is the part appropriate to your application?

Did you carefully and thoroughly read the instructions provided along with the part?

Do you have the proof of purchase?

Are you the original purchaser?

Is the part unmodified and clean?

Is the return date within 3 months from the purchase date?

Is the reason for return a legitimate product defect?

If the answer to all these questions is YES, please contact our Customer Service Department at 1-888-467-1625. You will be given a Retuned Goods Authorization Number (RGA) valid for 30 days. You will also be asked to ship the part prepaid to our facility. All shipments MUST be prepaid, include the original invoice and show the RGA on the outside of the package, otherwise it will be refused. Please include a brief explanation letter in order to expedite the warranty analysis process.

What doesn't this Warranty Cover?

The costs not covered by this warranty include but are not limited to:

- Removal, installation, shipment and insurance costs.
- Improper installation or maintenance
- Misuse or abuse, negligence
- Damage to related components
- Normal wear and tear.
- Costs incurred due to down time of vehicle
- Alterations on the original design or unauthorized repairs.

All warranties implied by law are limited in duration of this warranty. You have specific rights that may vary from state to state or Province to Province. By purchasing any of the products that are manufactured by speed tech performance you agree to any and all of the above terms and conditions. **Copyright © Speedtech Performance USA LLC**